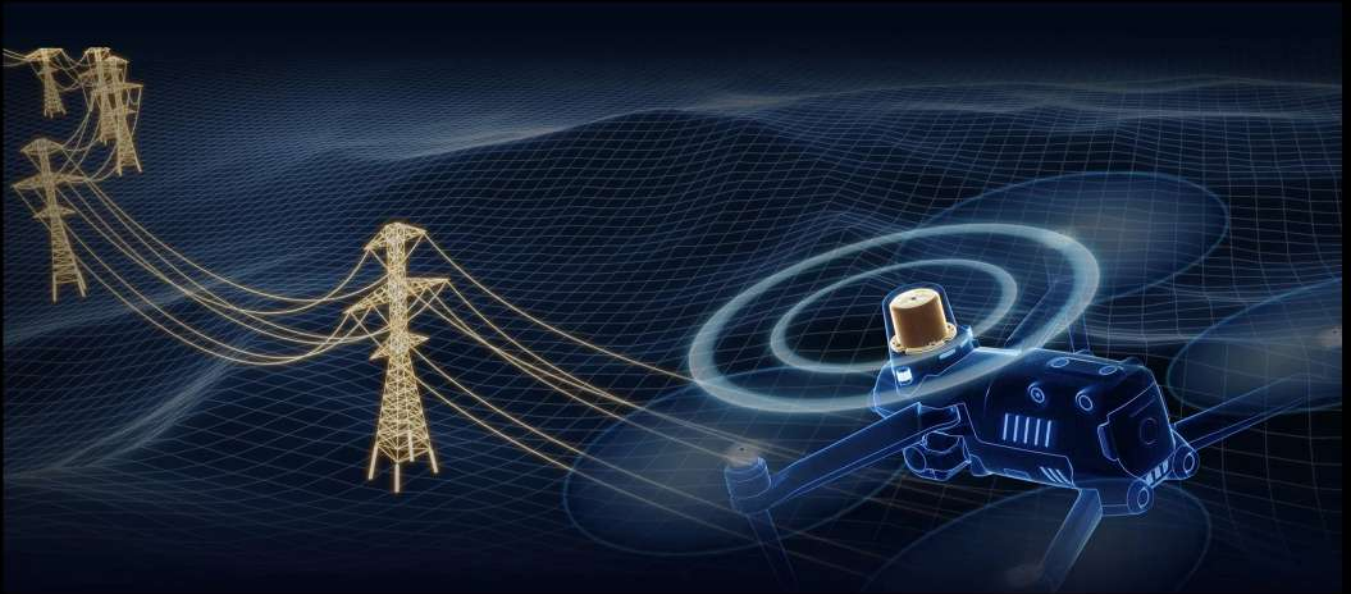




EVO II PRO RTK V2


Unrivaled Accuracy and Control





CENTIMETER-LEVEL POSITIONING


The EVO II RTK series integrates an entirely new RTK module, which provides real-time centimeter-level positioning data and supports Post-Processing Kinematic (PPK).

The aircraft can record the original satellite observation data, camera exposure parameters and various other data. The positioning system supports A-RTK base station and RTK network, which helps to achieve accurate and stable data acquisition in complex operation environments.

 Centimeter-level, high-precision positioning system

 No need for ground control points

 Omnidirectional obstacle avoidance

 A-RTK base station



DUAL CAMERAS, ACCURATE TEMPERATURE MEASUREMENT

DUAL CAMERAS, ACCURATE TEMPERATURE MEASUREMENT

EVO II Dual 640T RTK is equipped with a high resolution thermal imaging camera and 8K visible light camera, enabling you to capture highly detailed imagery to achieve optimal insights.



Precise temperature measurement

The EVO II Dual 640T RTK can accurately detect heat sources within a distance of 2-5 meters. By leveraging the compensation algorithm of infrared temperature measurement, the 640T RTK can regulate temperature deviations within 3 degrees Celsius.



High-resolution Thermal imaging sensor

The 640T RTK has a 13mm focal length combined with a 640*512 thermal imaging sensor, and an 8K ultra-high-definition visible camera. Together, these sensors provide you with dual vision to give you the crisp and clear imagery you need to accomplish your missions.

Multiple Color Modes

10 color schemes to enable more vivid scene recognition

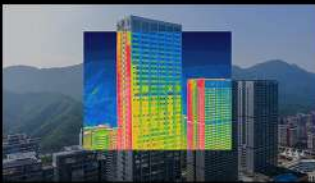
White Hot



Heat Detection



Rainbow



Lava



Gradation



Iron bow



Arctic



Searing



Cold and Hot



Enhanced Rainbow





CAPTURE EVERY DETAIL

CAPTURE EVERY DETAIL

EVO II Pro RTK has high dynamic range and powerful low light performance, enabling users to capture clear imagery without missing any detailed information.

High resolution camera

The 1 inch CMOS sensor coupled with 20 MP and F/2.8-F11 aperture, gives you the versatility and ability to capture the best in a variety of mission scenarios.

6K Ultra HD video

The 6K resolution ultra-high-definition lens, supported by a 1-inch sensor, makes it easy to achieve professional shooting results.

JETAYU



LIGHT, EFFICIENT AND RELIABLE

The EVO II RTK series inherits the foldable design of the original EVO II series, making it compact, light, portable and ready to fly in just a matter of seconds. Alongside a 9km maximum transmission range, the aircraft offers a flight time of up to 36 minutes and can reach a top speed of up to 20m/s, making it the perfect flying companion for your daily missions.

- **Max Flight Time**

36Min

- **Max Transmission Range**

9km

- **Max Speed**

20m/s



MISSION EXECUTION WITH ADVANCED INTELLIGENCE

EVO II RTK Series provides users with a full range of intelligent features and solutions to suit a variety of mission needs. Using advanced flight control and the latest AI technology, the aircraft can significantly improve mission work flows and help reduce operating costs.



MISSION PLANNING

After creating a flight route, EVO II RTK series can fly on the designated flight path autonomously, enabling a smooth, safe and more efficient flight

- Waypoint Mission
- Rectangle Mission
- Polygon Mission
- Oblique Photography

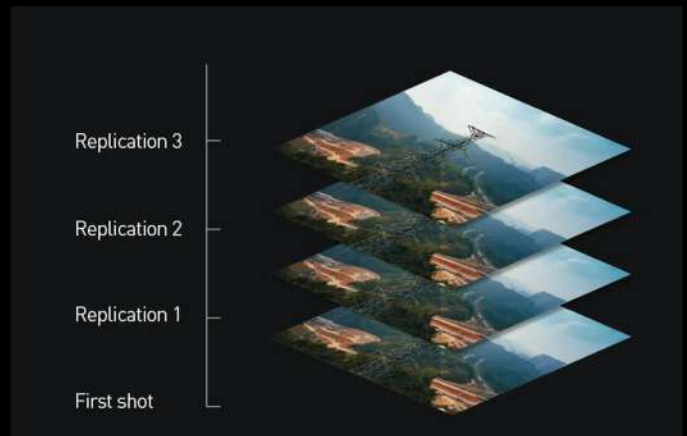




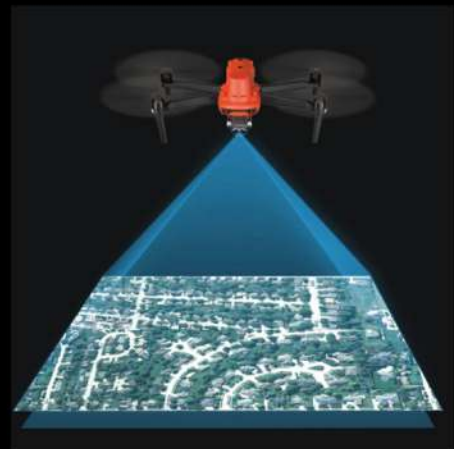
PHOTO REPLICATION

For repeatable data acquisition missions, you can record the drone's previous shooting positions. All the gimbals, camera, and aircraft movements will be replicated, thus producing a full record of the entire mission.



OMNIDIRECTIONAL SENSING & OBSTACLE AVOIDANCE

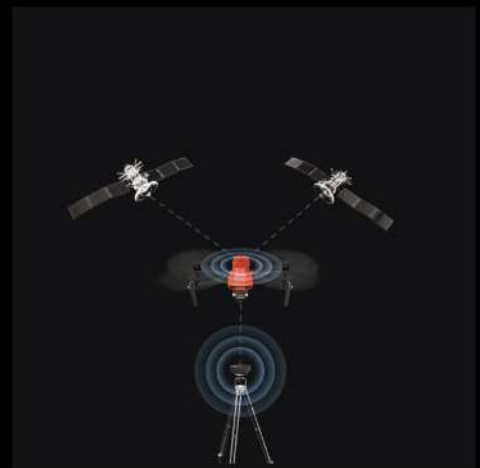
EVO II RTK Series comes built in with a 6-directional sensing system that provides the aircraft with obstacle avoidance capabilities in all directions to enable a safer flight.



NO NEED FOR GROUND CONTROL POINTS

EVO II RTK series leverages a high precision RTK module and supports PPK, time synchronization, and is not limited by communication links and network coverage.

- High precision RTK module
- Support PPK





RTK / PPK

Coupled with the EVO II Series aircraft is an A-RTK base station and RTK network service.



A-RTK HIGH-PRECISION GNSS BASE STATION

The EVO II RTK Series supports A-RTK high-precision GNSS base station to obtain real-time differential data, which makes it possible to obtain the accurate coordinates of the designated target point.

